

**Government of India**  
**Ministry of Tribal Affairs**



**EMRS LOGO and**  
**UNIFORM**

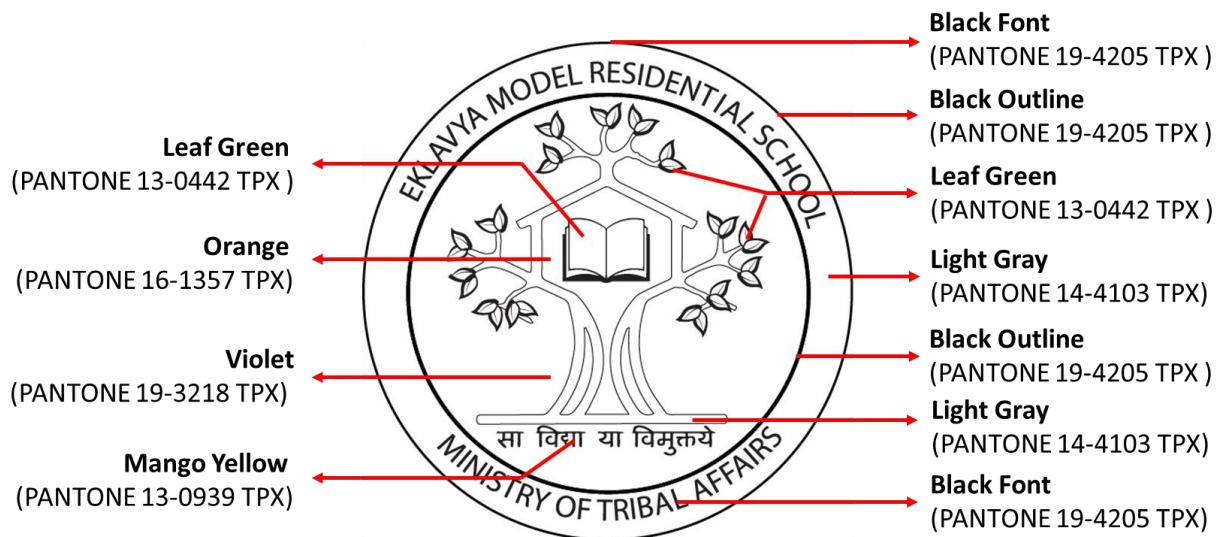
**Design & Specifications**



# 1. LOGO



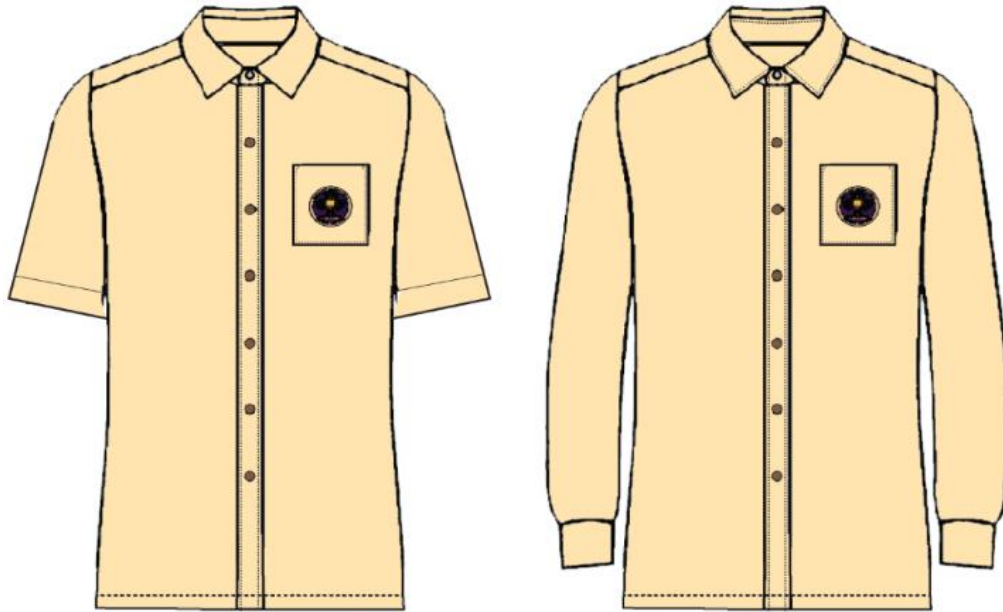
## Colour placement indications for logo



### Note:

- The logo will be embroidered separately and stitched on the pocket of the jacket.
- The logo will be transfer- printed as a chest print on the House T-shirts.

## 2. SHIRT (BOYS)



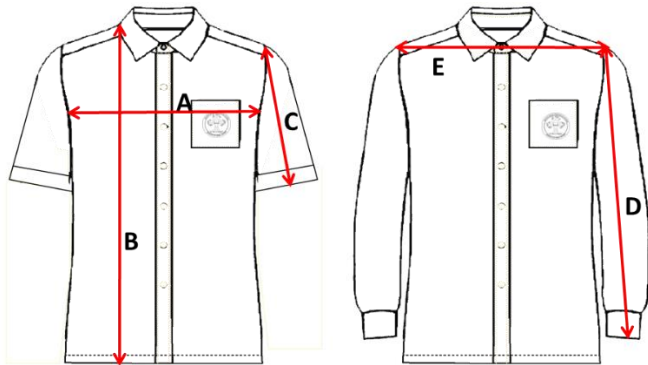
**Pantone: 13-1010 TPX (BEIGE)**

- Basic button-up shirt collar.
- Shoulder yoke at the back for endurance.
- Buttons matched to the shirt color
- Single patch pocket in square shape with logo sticker.
- Straight hem and plain cuff of full-sleeved shirt
- Standard front placket with basic white plastic buttons

### **Fabric Specifications:**

1. Fabric Weight (ISO 3801):	Weight per unit area 128.0 gms/square meter
2. Count (ISO 7211-5):	Warp 42.9 Ne Weft 44.7 Ne
3. Construction (ISO 7211-2)	Warp 141 per inch Weft 78 per inch
4. Fiber Content (ISO 1833)	Qualitative Warp Cotton/Polyester Weft Cotton/Polyester Quantitative 64.8% Polyester 35.2% Cotton
5. Weave Type:	In House Method, Plain Weave (1 X 1)

## Size chart

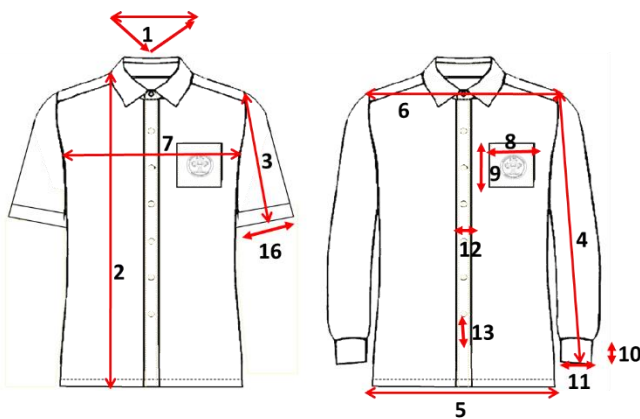


	A	B	C	D	E	
Size	Chest(inches)	Length(inches)	Short Sleeve(inches)	Full Sleeve(inches)	Shoulder(inches)	Age(in years)
6	30	21	6	17	14	5-6
8	32	22	6.5	18.5	15	6-8
10	33	24	7	20	16	8-10
12	35	26	7.5	21	17	10-12
14	36	28	8	22.5	18	12-14
16	38	28.5	8.5	23.5	18.5	14-15
M	42	29	8.5	24	19	16-17
L	44	29.5	8.5	24.5	19.5	17-18

### Note on Size and Fits

- Sizes may vary from person to person.
- This size chart should be used only as an approximate guide.
- Every person will have variations in size & shape. Therefore he/she may not necessarily fit into these categories.

## Indicative measurements



Key	Details	Measurement (in Inches)
1	Neck Round	15.5
2	Full Length	29
3	Short Sleeve Length	8.5
4	Long Sleeve Length	24
5	All Round Hem	41
6	Shoulder	19
7	Chest Width	42
8	Patch Pocket Width	5.5
9	Patch Pocket Height	5.5
10	Cuff Width	2.5
11	Cuff All Round	9.5
12	Placket Width	1
13	Button Spacing	3.5
14	All Round Hem Sleeve	16

The measurements are for M size.  
The measurements include tolerance of +/- .5 inches.

*Note: The fabric is being procured from KVIC and would be made available at the State Level soon. States to make necessary arrangements for stitching of the uniform and fixing of the logo on the uniform as per the specifications*

### 3. TROUSER (BOYS)



FRONT

BACK

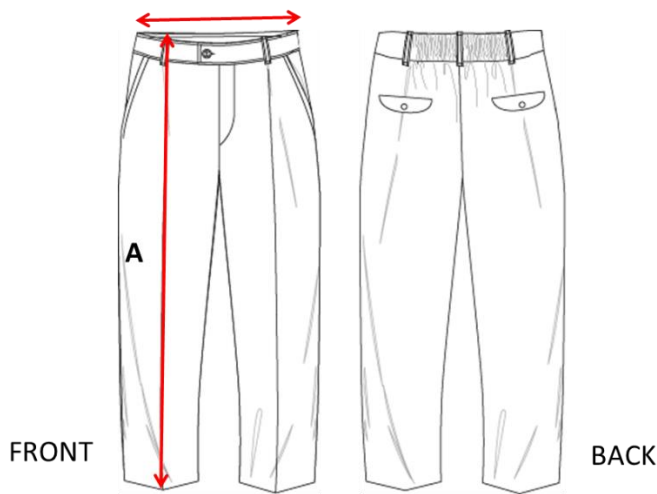
**PANTONE: 19-1726 TPX (MAROON)**

- Full length formal trouser
- Two side seam pockets
- Front zipper with waist button.
- Standard waist band with loops
- **Elastic on back waistband** for better waist grip.

#### **Fabric Specifications:**

1. Fabric Weight (ISO 3801):	Weight per unit area 272.0 gms/square meter
2. Count (ISO 7211-5):	Warp: 2/27.0 Ne Weft: 14.5 Ne
3. Construction (ISO 7211-2)	Warp: 92 per inch Weft: 58 per inch
4. Fiber Content (ISO 1833)	Qualitative Warp: Polyester/Viscose Weft: Polyester/Viscose Quantitative: 75.7% Polyester 24.3% Viscose
5. Weave Type:	In House Method, 2 / 1 Right Hand Twill

## Size chart

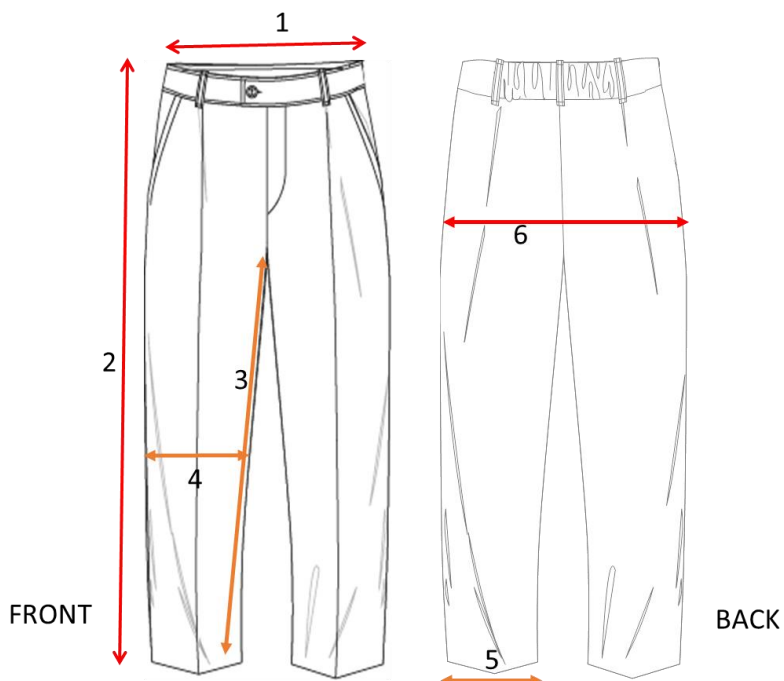


	A	B	
Size	Length(inches)	Waist (inches)	Age (in years)
26	27	23	4-5
28	29	24	5-6
30	31	25	6-8
32	33	26	8-10
34	35	27	10-12
36	37	28	12-13
38	39	29	13-14
40	41	30	14-15
42	43	32	16-17
44	44	34	17-18
46	44	36	18

### Note on Size and Fits

- Sizes may vary from person to person.
- This size chart should be used only as an approximate guide.
- Every person will have variations in size & shape. Therefore he/she may not necessarily fit into these categories.

## Indicative measurements

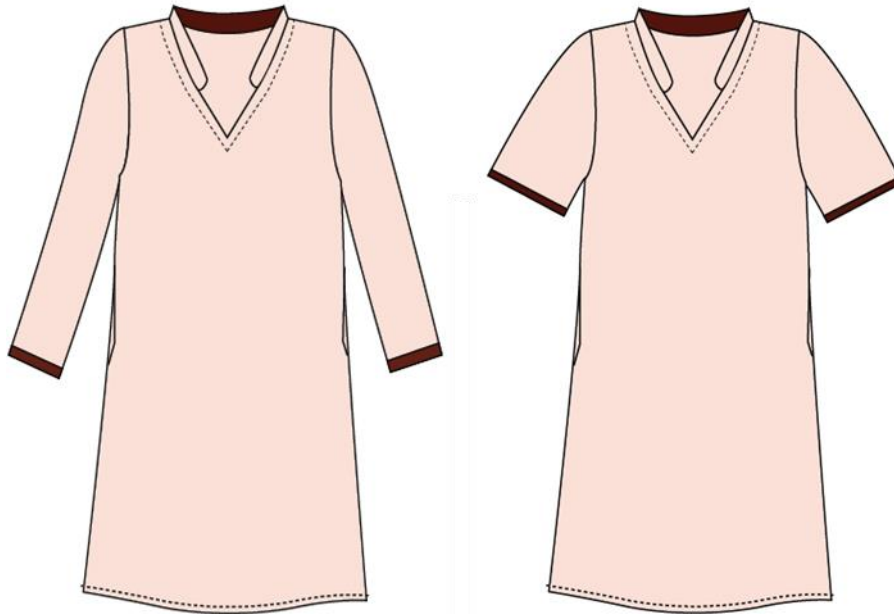


Key	Details	Measurement (in Inches)
1	Waist Round	34
2	Full Length	44
3	Inseam	29.5
4	Knee	21
5	Leg Opening	20
6	Hip Round	40

The Measurements Are For 44 Size.  
The Measurements Include Tolerance Of +/- .5 Inches.

*Note: The fabric is being procured from KVIC and would be made available at the State Level soon. States to make necessary arrangements for stitching of the uniform and fixing of the logo on the uniform as per the specifications*

### 3. KURTA (GIRLS)



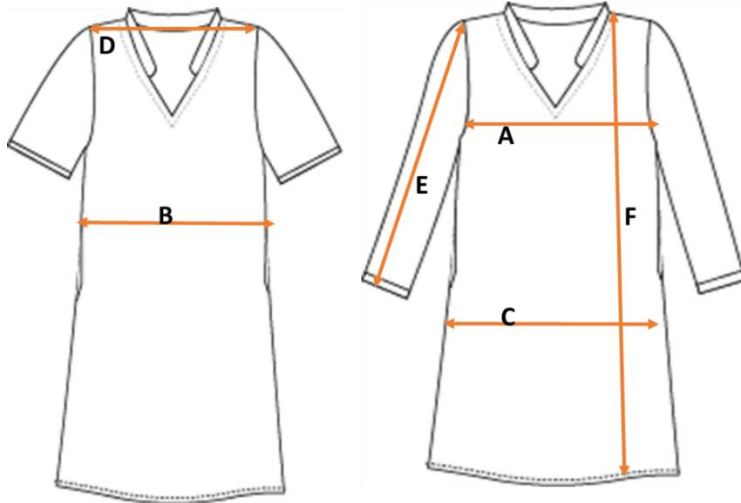
**PANTONE: 13-2004 TPX (LIGHT PINK)**

- States have the options of half and full sleeves.
- Knee length
- Moderate fit.
- One-inch maroon strip on the sleeve edge (as per sample.)
- Side seam pockets.
- Teaming the kurta with Salwar as bottom wear
- Mandatory to wear the sleeveless waistcoat on top.

#### **Fabric Specifications:**

1. Fabric Weight (ISO 3801):	Weight per unit area 128.0 gms/square meter
2. Count (ISO 7211-5):	Warp 42.9 Ne Weft 44.7 Ne
3. Construction (ISO 7211-2)	Warp 141 per inch Weft 78 per inch
4. Fiber Content (ISO 1833)	Qualitative Warp Cotton/Polyester Weft Cotton/Polyester Quantitative 64.8% Polyester 35.2% Cotton
5. Weave Type:	In House Method, Plain Weave (1 X 1)

## Size chart

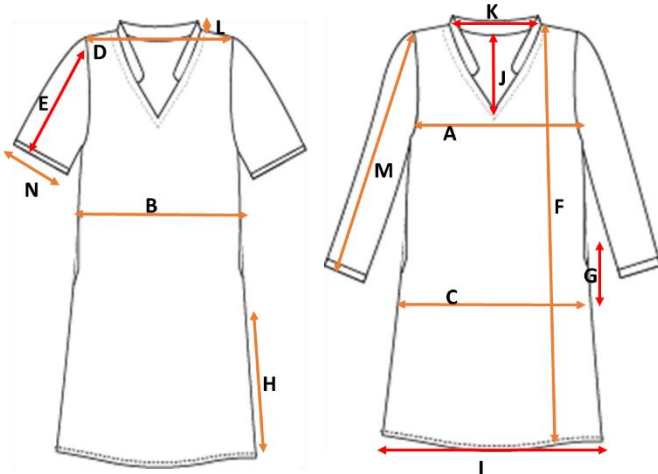


	A	B	C	D	E	F
Label Size	Bust Size (inches)	Waist Size (inches)	Hips (inches)	Shoulder (inches)	Sleeve Length (inches)	Length (inches)
S	36	34	38	13	16	35
M	38	36	40	14	16	35
L	40	38	42	15	16	35
XL	42	40	44	16	16	35
XXL	44	42	46	17	16	35
3XL	46	44	48	18	16	35
4XL	48	46	50	19	16	35

### Note on Size and Fits

- Sizes may vary from person to person.
- This size chart should be used only as an approximate guide.
- Every person will have variations in size & shape. Therefore he/she may not necessarily fit into these categories.

## Indicative measurements



Key	Details	Measurement (In Inches)
A	Chest All round	36
B	Waist All round	34
C	Hip All Round	38
D	Shoulder	13
E	Short Sleeve Length	7.5
F	Full Length	38
G	Pocket Slit	5.5
H	Slit Length	12
I	Front Hem	20
J	Neck Depth	7
K	Neck Width	5 1/8
L	Collar Width	1 1/8
M	Full Sleeve Length	16
N	Short Sleeve Round	12

The Measurements are for S Size. The Measurements Include Tolerance Of +/- .5 Inches.

*Note: The fabric is being procured from KVIC and would be made available at the State Level soon. States to make necessary arrangements for stitching of the uniform and fixing of the logo on the uniform as per the specifications*

## 4. WAISTCOAT (GIRLS)



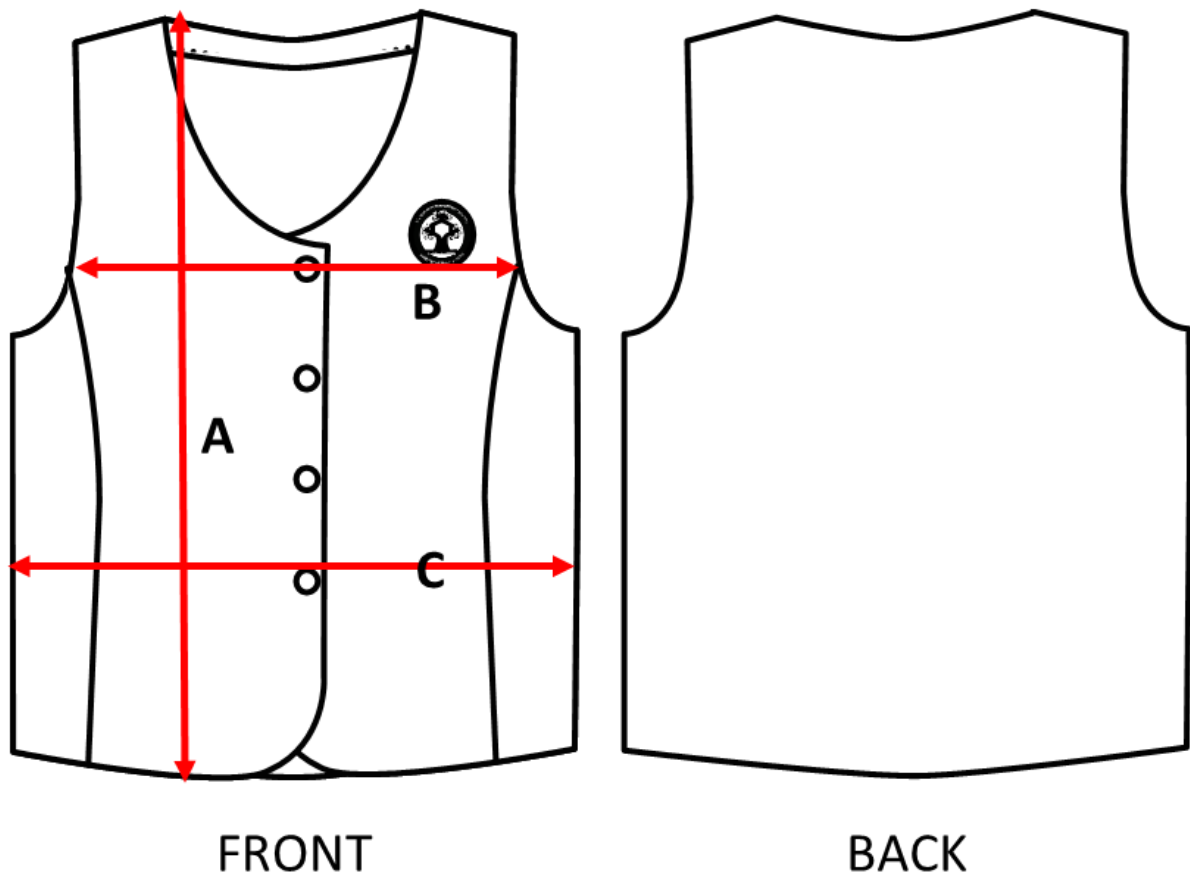
**PANTONE: 19-1726 TPX (MAROON)**

- To be worn over the kurta.
- Princess seams in front and plain back.
- Buttons closure on the Centre front.
- Has a monogram on the top right side of the chest.

### Fabric Specifications:

1. Fabric Weight (ISO 3801):	Weight per unit area 272.0 gms/square meter
2. Count (ISO 7211-5):	Warp: 2/27.0 Ne Weft: 14.5 Ne
3. Construction (ISO 7211-2)	Warp: 92 per inch Weft: 58 per inch
4. Fiber Content (ISO 1833)	Qualitative Warp: Polyester/Viscose Weft: Polyester/Viscose Quantitative: 75.7% Polyester 24.3% Viscose
5. Weave Type:	In House Method, 2 / 1 Right Hand Twill

## Indicative measurements

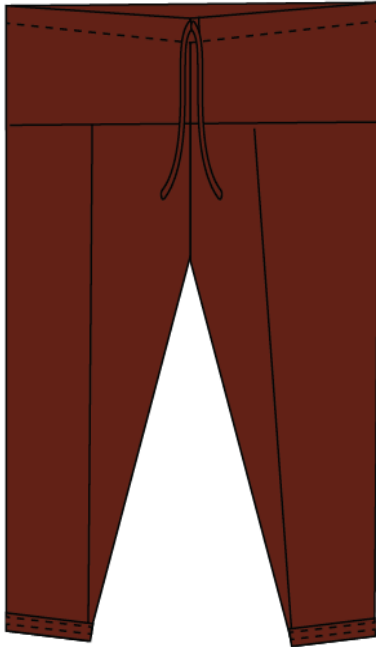


Key	Details	Measurement (In Inches)
A	Full Length	19
B	Chest	38
C	Waist	36
D	Neck Depth	8.5

The Measurements are for S Size. The Measurements Include Tolerance Of +/- .5 Inches.

*Note: The fabric is being procured from KVIC and would be made available at the State Level soon. States to make necessary arrangements for stitching of the uniform and fixing of the logo on the uniform as per the specifications*

## 5. SALWAR (GIRLS)



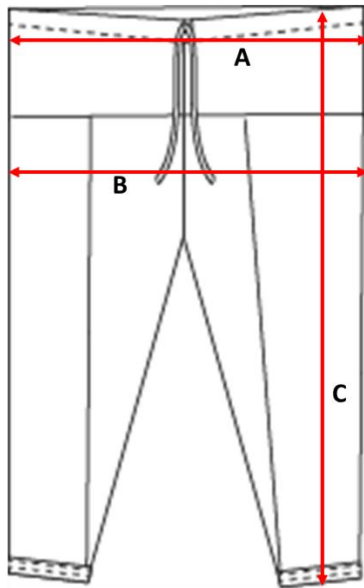
- Drawstring at the waist (may be replaced with elastic for younger students, if required)
- Loose and comfortable fit with adequate ease.

**PANTONE: 19-1726 TPX (MAROON)**

### Fabric Specifications:

1. Fabric Weight (ISO 3801):	Weight per unit area 128.0 gms/square meter
2. Count (ISO 7211-5):	Warp: 42.9 Ne Weft: 44.7 Ne
3. Construction (ISO 7211-2)	Warp: 141 per inch Weft 78 per inch
4. Fiber Content (ISO 1833)	Qualitative Warp: Cotton/Polyester Weft: Cotton/Polyester Quantitative: 64.8% Polyester 35.2% Cotton
5. Weave Type:	In House Method, Plain Weave (1 X 1)

## Size chart

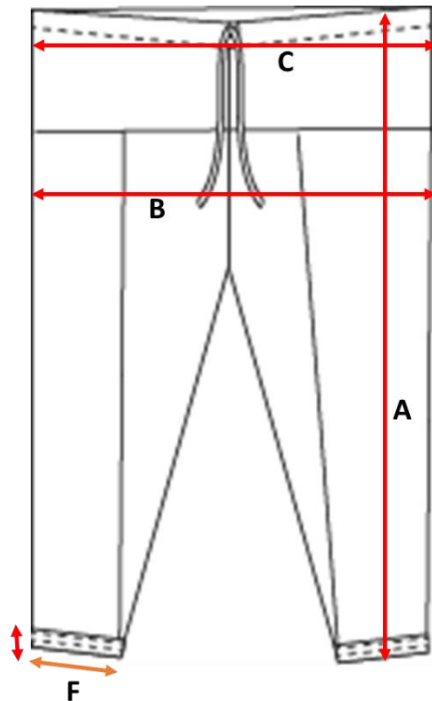


	SALWAR		
	A	B	C
	WAIST	HIPS (GARMENT)	LENGTH
S (36)		44 inches (111.5 cms)	41 inches (104 cms)
M (38)		46 inches (116.5 cms)	42 inches (106.5 cms)
L (40)	DRAW STRING	48 inches (122 cms)	42 inches (106.5 cms)
XL (42)		50 inches (127 cms)	42 inches (106.5 cms)
XXL (44)		52 inches (132 cms)	42 inches (106.5 cms)

### Note on Size and Fits

- Sizes may vary from person to person.
- This size chart should be used only as an approximate guide.
- Every person will have variations in size & shape. Therefore he/she may not necessarily fit into these categories.

## Indicative measurements



Key	Details	Measurements (in Inches)
A	Full Length	41
B	Hip Round	44
C	Round Waist	44
D	Pancha Width	1 1/4
E	Draw String	54
F	Leg Round Hem	14

The measurements are for S size.  
The measurements include tolerance of +/- .5 inches.

*Note: The fabric is being procured from KVIC and would be made available at the State Level soon. States to make necessary arrangements for stitching of the uniform and fixing of the logo on the uniform as per the specifications.*

## 6. SWEATER (BOYS AND GIRLS)



**Full Sleeve**



**Half Sleeve**

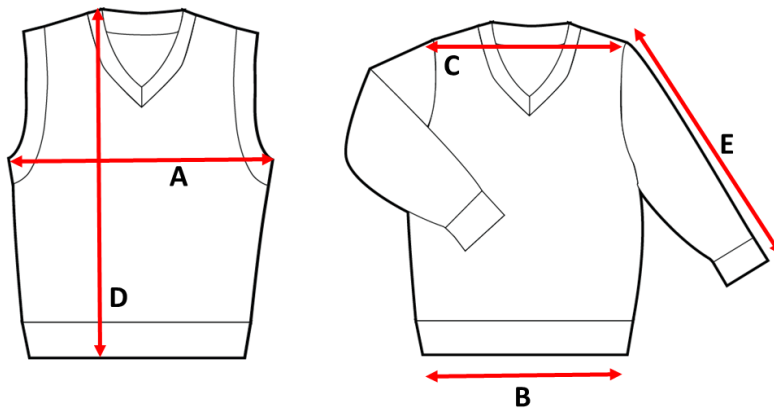
**PANTONE: 19-5513 TPX (DARK GREEN)**

- Neckline is V shaped
- Two options i.e. half sleeve and full sleeve.
- The sweaters have a monogram patched on the right chest.

### Fabric Specifications:

1. Fabric Weight (ISO 3801):	Weight per unit area 352.0 gms/square meter
2. Count (ISO 7211-5):	2/17.1 Ne
3. Construction (ISO 7211-2)	Wales: 13 per inch (One side) Course: 24 per inch
4. Fiber Content (ISO 1833)	Qualitative: Acrylic Quantitative: 100% Acrylic
5. Weave Type:	In House Method, 1X1 Rib

## Size chart



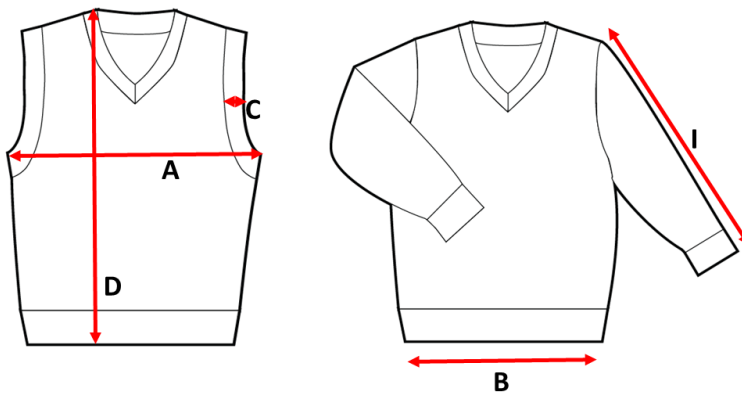
	Size	90	100	110	120	130	140	150	160	170	180	190
<b>A</b>	1/2 Chest	31	32½	34	35½	38½	40½	43	47	51	55	59
<b>B</b>	1/2 Bottom	27	28	29	30	31½	33	34½	37½	40½	43½	46½
<b>C</b>	Shoulder	25½	27	28½	30	31½	33	34½	37½	40½	43½	46½
<b>D</b>	Body Length	35	39	43	47	50	53	56	60	64½	69½	74½
<b>E</b>	Sleeve Length	31	34	37	41	45	49	52	55	58	61	63

Unit: CM

### Note on Size and Fits

- Sizes may vary from person to person.
- This size chart should be used only as an approximate guide.
- Every person will have variations in size & shape. Therefore he/she may not necessarily fit into these categories.

## Indicative measurements



Key	Details	Measurements (in Inches)
A	Round Chest	41
B	Round Bottom Hem	41
C	Rib Width at Armhole	.75
D	Full Length	28
E	Neck Depth from HPS	7
F	Neck Rib Width	1
G	Neck Width HPS-HPS	6
H	Rib Length at Wrist	2.25
I	Full Sleeve Length from LSP	23.5
J	LSP To Arm Hole Bottom	9

The measurements are for 40 Chest size. The measurements include tolerance of +/- .5 inches.

## 7. BLAZER (BOYS AND GIRLS)



**FRONT**



**BACK**

**PANTONE: 19-5513 TPX (DARK GREEN)**

- Made of Felt fabric with lining.
- Notched collar with 3 buttons on the Centre Front opening.
- Embroidered monogram on the chest patch pocket.
- Two patch pockets with flaps at the hip level
- Vent at the Center Back seam for ease of movement

### Fabric Specifications:

1. Fabric Weight (ISO 3801): Weight per unit area 365.0 gms/ square meter

2. Count (ISO 7211-5): N/A due to fabric structure

3. Construction (ISO 7211-2) Warp: 32 per inch  
Weft: 24 per inch

**Qualitative**

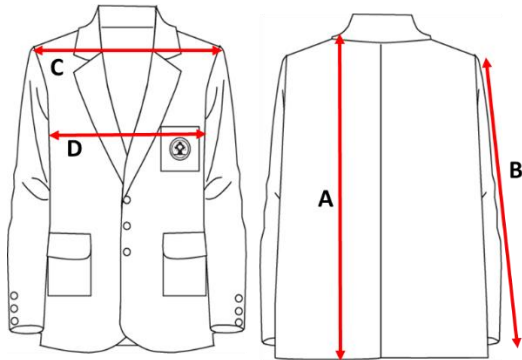
4. Fiber Content (ISO 1833) Warp: Wool/Acrylic/Nylon

Weft: Wool/Acrylic/Nylon

**Quantitative:** 62.8% Wool 18.9% Acrylic 18.3%  
Nylon

5. Weave Type: 2/2 Twill

## Size chart

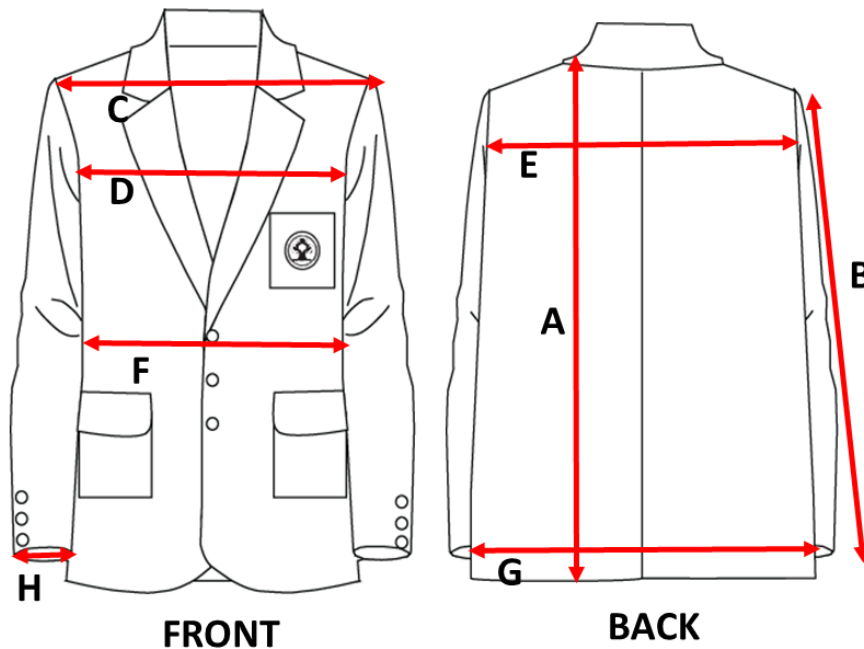


	A	B	C	D	
Size	Length(inches)	Full Sleeve(inches)	Shoulder(inches)	Chest(inches)	Age(in Years)
24	22	18.5	14	24	3-4
26	23	20.5	14.5	26	4-6
28	24	21.5	15	28	6-8
30	25	22.5	15.5	30	8-10
32	26	23	16	32	10-11
34	27	24	17.5	34	12-13
36	28	24.5	18.5	36	13-14
38	29	25.5	19	38	14-15
40	30	26	19.5	40	15-16
42	31	26	20	42	16-17
44	31	26	20	44	17-18

### Note on Size and Fits

- Sizes may vary from person to person.
- This size chart should be used only as an approximate guide.
- Every person will have variations in size & shape. Therefore he/she may not necessarily fit into these categories.

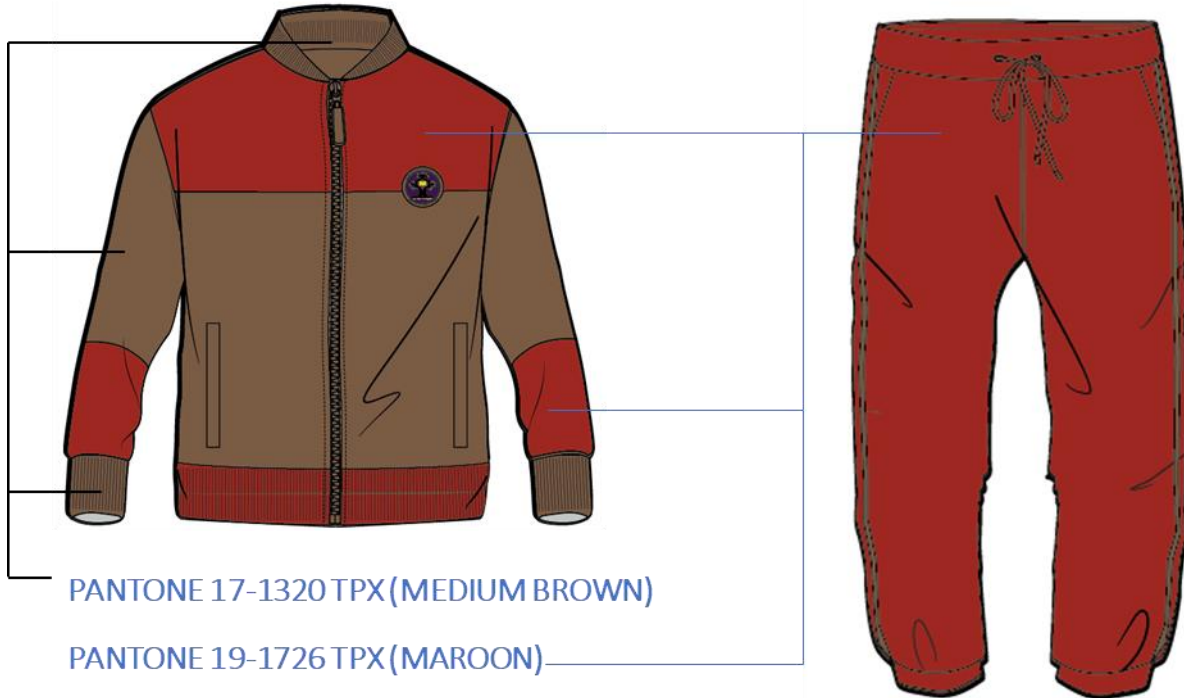
## Indicative measurements



Key	Details	Measurements (in Inches)
A	Full Length	27
B	Sleeve Length	23
C	Shoulder	17.5
D	Chest	38
E	Across Back	16
F	Waist Round	30
G	Hip Round	38
H	Sleeve Hem	11

The measurements are for 38 chest (ready size). The measurements include tolerance of +/- .5 inches.

## 8. TRACK SUIT: (BOYS AND GIRLS)

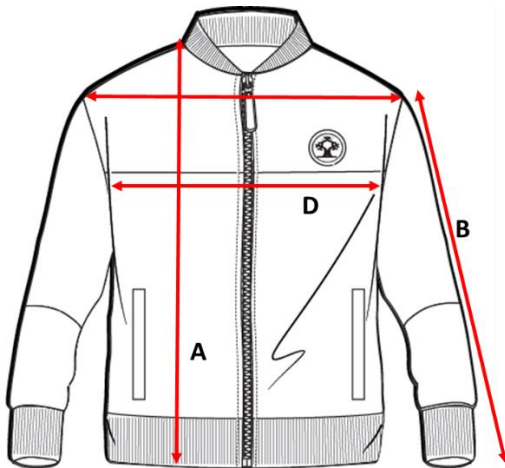


- The track suit top has Center front opening with DTM detachable zip.
- Contrast color gives visibility and identity.
- Two side pockets on the top and two vertical waist pockets on the trouser.
- Rib knit on the sleeve cuff, collar and hem to ensure air insulation and perfect fit.
- The trouser waist is elasticized along with drawstring option.
- The track suit will be worn over basic uniforms in intense weather and during sports activities.

### Fabric Specifications:

1. Fabric Weight (ISO 3801):	Weight per unit area 340.0 gms/square meter
2. Count (ISO 7211-5):	29.3 Ne+83.3D+11.5Ne
3. Construction (ISO 7211-2)	Wales: 30.0 Ne Course: 126.0 Ne
4. Fiber Content (ISO 1833)	Qualitative: Polyester/Cotton Quantitative: 75.0% Polyester 25.0% Cotton
5. Weave Type:	Face side Single jersey, Back Side Fleece

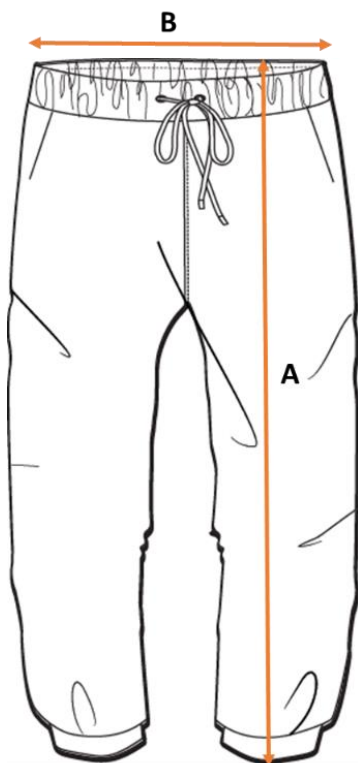
## Size chart



### Note on Size and Fits

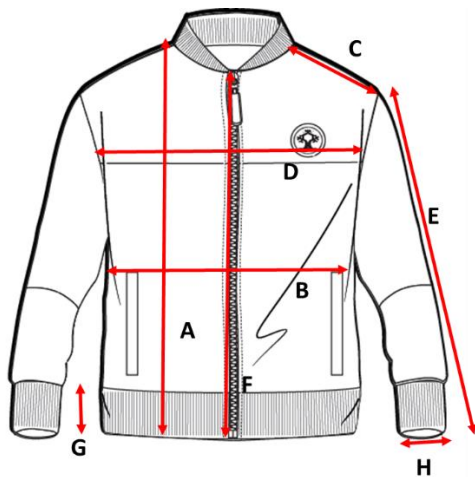
- Sizes may vary from person to person.
- This size chart should be used only as an approximate guide.
- Every person will have variations in size & shape. Therefore he/she may not necessarily fit into these categories.

	A	B	C	D	
Size	Length(inches)	Full Sleeve(inches)	Shoulder(inches)	Chest(inches)	Age(in Years)
24	22	18.5	14	24	3-4
26	23	20.5	14.5	26	4-6
28	24	21.5	15	28	6-8
30	25	22.5	15.5	30	8-10
32	26	23	16	32	10-11
34	27	24	17.5	34	12-13
36	28	24.5	18.5	36	13-14
38	29	25.5	19	38	14-15
40	30	26	19.5	40	15-16
42	31	26	20	42	16-17
44	31	26	20	44	17-18



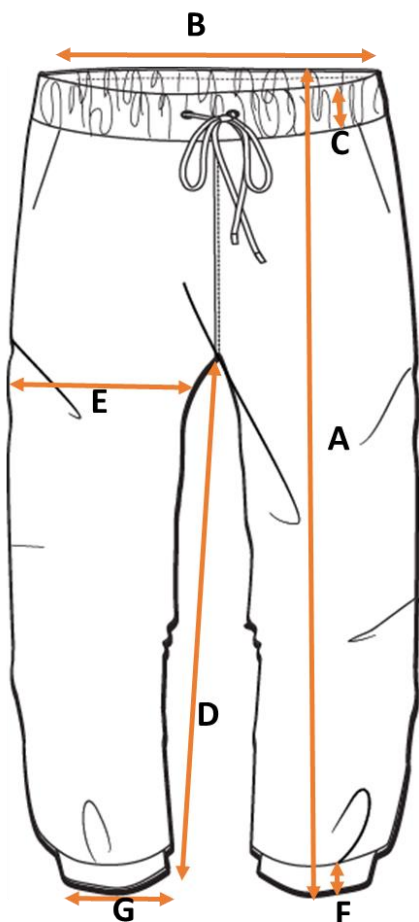
	A	B	
Size	Length(inches)	Waist(inches)	Age(in years)
22	23	20-21	2-3
24	25	21-22	3-4
26	27	22-23	5-6
28	29	23-24	6-8
30	31	24-25	8-10
32	33	25-26	10-12
34	35	26-27	12-13
36	37	27-28	13-14
38	39	28-29	14-15
40	41	29-30	15-16
42	43	30-32	16-18

## Indicative measurements



Key	Details	Measurements (in Inches)
A	Full length	28
B	Waist round	40
C	HPS to shoulder	9
D	Chest round	41
E	Full sleeve length	24.5
F	Centre front length	24.5
G	Sleeve and Hem rib width	2
H	Sleeve Hem round	7.5

The measurements are for 40 CHEST size. The measurements include tolerance of +/- .5 inches.



Key	Details	Measurements (in Inches)
A	Full Length	40
B	Waist All-Round	32
C	Waist Band Width	1.5
D	Inseam Length	29
E	Thigh All-Round	26.5
F	Leg Rib Width	1.5
G	Leg Hem All-Round	10

The measurements are for 32 WAIST size. The measurements include tolerance of +/- .5 inches.

## 9. HOUSE T SHIRTS (BOYS AND GIRLS)



**PANTONE 15-5421 TPX  
(TEAL GREEN)**



**PANTONE 15-1049 TPX  
(MUSTARD)**



**PANTONE 14-0446 TPX  
(LIME GREEN)**



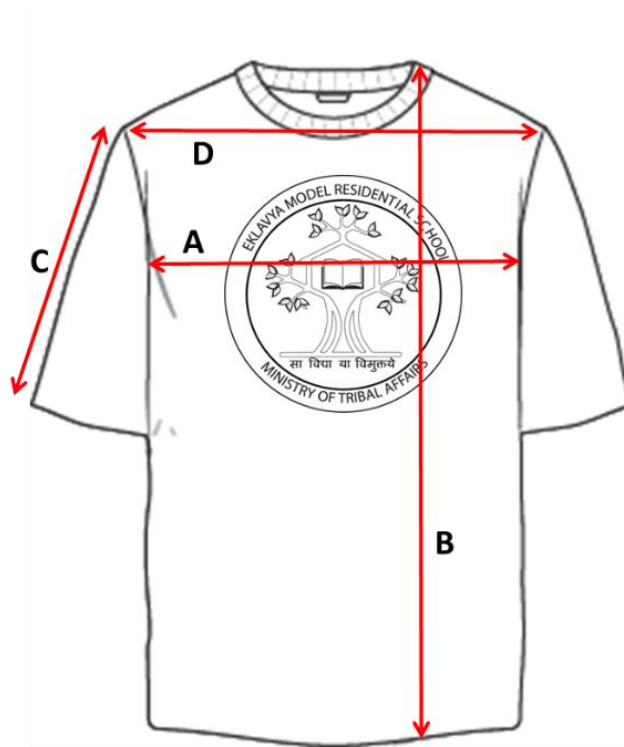
**PANTONE 18-3218 TPX  
(PURPLE)**

- The T shirts are in 4 different colors for identification of the respective House/ team.
- Round neckline with rib knit, dyed to match the color of the T shirt.
- Logo is transfer printed on the chest. The back is plain.

### Fabric Specifications:

1. Fabric Weight (ISO 3801):	Weight per unit area 204.0 gms/square meter
2. Count (ISO 7211-5):	21.2 Ne
3. Construction (ISO 7211-2)	Wales: 32 per inch Course: 48 per inch
4. Fiber Content (ISO 1833)	Qualitative: Cotton Quantitative: 100% Cotton
5. Weave Type:	Single Jersey Knit

## Size chart



	A	B	C	D	
Size	Chest(inches)	Length(inches)	Sleeve(inches)	Shoulder(inches)	Age (in years)
26	30	19	5	12.5	5-6
28	32	20.5	5.5	13	6-8
30	34	22	6	13.5	8-10
32	36	23.5	6.5	14.5	10-12
34	38	24.5	7	15.5	12-14
36	39	26.5	7.5	16.5	14-15
38	40	27.5	8	17.5	15-16
40	42	28.5	8.5	18	16-17

### Note on Size and Fits

- Sizes may vary from person to person.
- This size chart should be used only as an approximate guide.
- Every person will have variations in size & shape. Therefore he/she may not necessarily fit into these categories.

## 10. TRACK LOWERS (TO BE WORN WITH HOUSE JERSEYS)



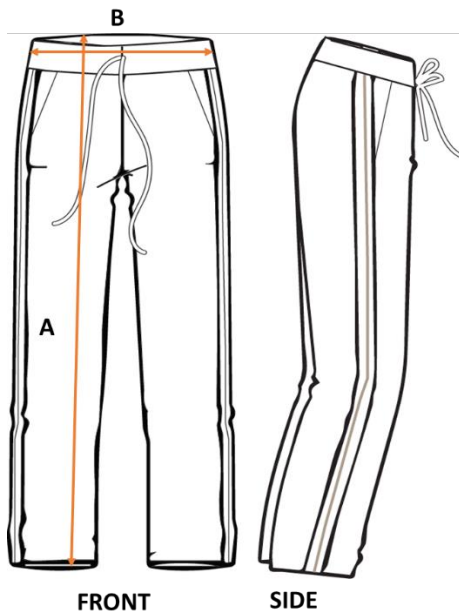
PANTONE 17-1320 TPX (MEDIUM BROWN)

- To be worn in the summer with the House T-shirts.
- Two side seam pockets.
- Elasticized waistband with drawstring adjustment option.
- Two stripes on the side seam in contrast color.

### Fabric Specifications:

1. Fabric Weight (ISO 3801):	Weight per unit area 245.0 gms/square meter
2. Count (ISO 7211-5):	23.0 Ne
3. Construction (ISO 7211-2)	Wales: 26 per inch Course: 92 per inch
4. Fiber Content (ISO 1833)	Qualitative: Cotton/Polyester Quantitative: 54.9% Polyester 45.1% Cotton
5. Weave Type:	Pique weave

## Size chart

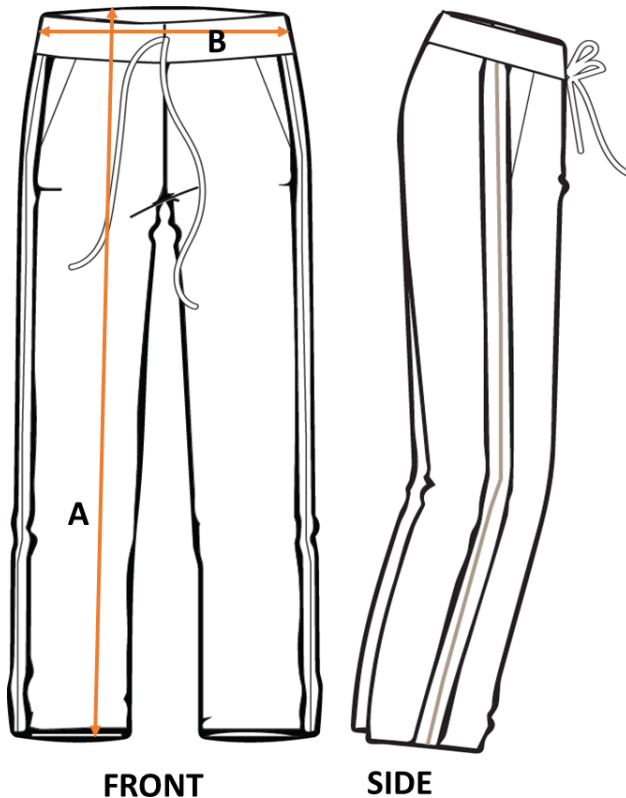


	A	B	
Size	Length(inches)	Waist(inches)	Age(in years)
26	27	22-23	5-6
28	29	23-24	6-8
30	31	24-25	8-10
32	33	25-26	10-12
34	35	26-27	12-13
36	37	27-28	13-14
38	39	28-29	14-15
40	41	29-30	15-16
42	43	30-32	16-18

### Note on Size and Fits

- Sizes may vary from person to person.
- This size chart should be used only as an approximate guide.
- Every person will have variations in size & shape.

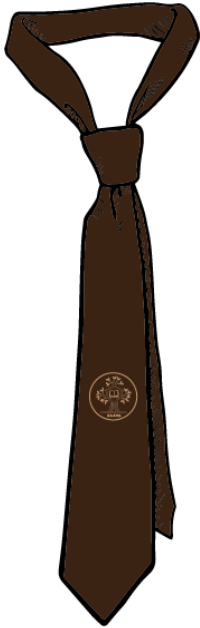
## Indicative measurements



Key	Details	Measurements (in Inches)
A	Full Length	42
B	Waist All-Round	32
C	Hip All-Round	40
D	Thigh All-Round	26.5
E	Leg Hem All-Round	18
F	Inseam Length	31

The measurements are for 32 WAIST (ready size). The measurements include tolerance of +/- .5 inches.

## 11. NECK TIE

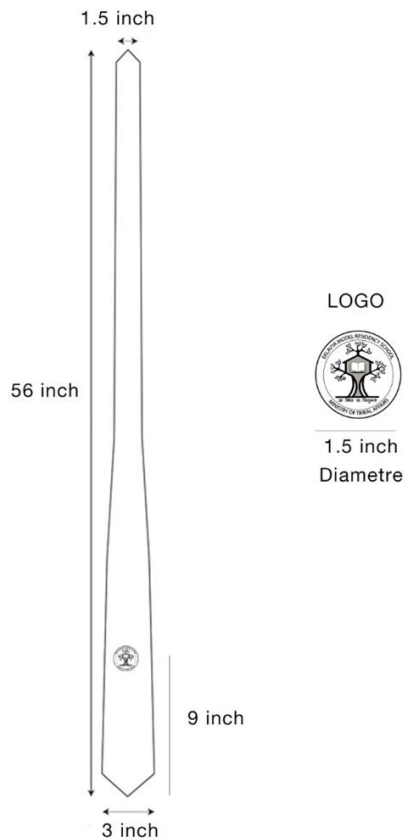


PANTONE 13-1010 TPX (BEIGE)

PANTONE 19-0912 TPX (COFFEE BROWN)

- The tie is for the boys.
- The EMRS logo is woven on the tie in a single color. (Pantone 13-1010 TPX (BEIGE))

### Indicative measurements



## 11. SOCKS



PANTONE 17-1320 TPX  
(MEDIUM BROWN)

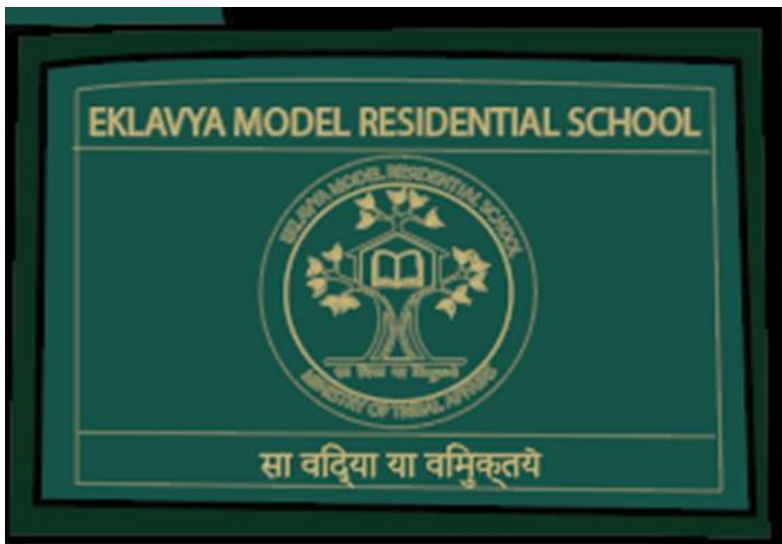
- The socks are calf length in beige tone.

Size	Age (years)
3	5 - 6 Y
4	7 - 8 Y
5	9 - 10 Y
6	11 - 14 Y
FREE	15 Y and Above

## 12. BELT WITH MONOGRAMMED BUCKLE



PANTONE 19-5513 TPX (DARK GREEN)



- The belt is wide for firm waist grip.
- The school logo is printed on the buckle in a single colour for higher visibility.